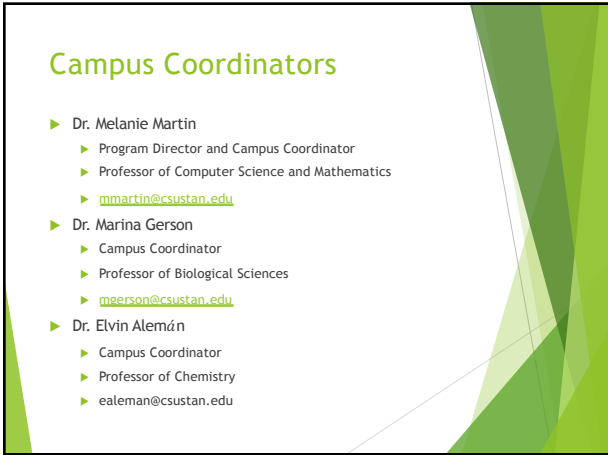


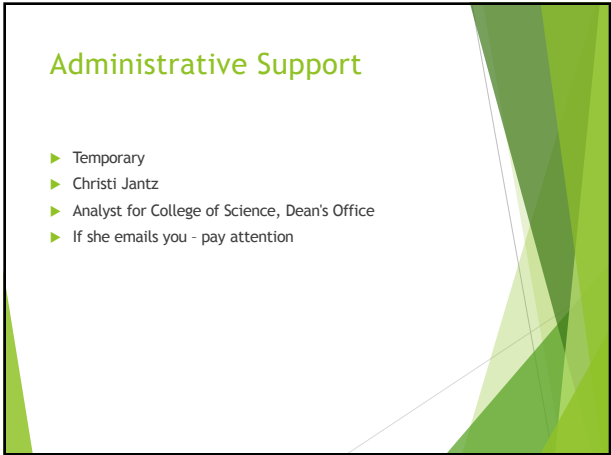
1



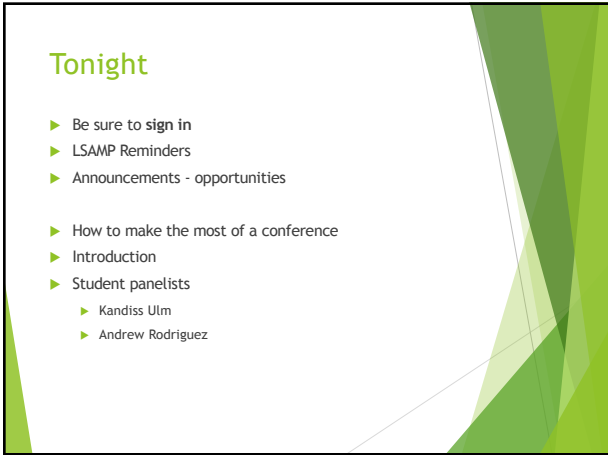
2



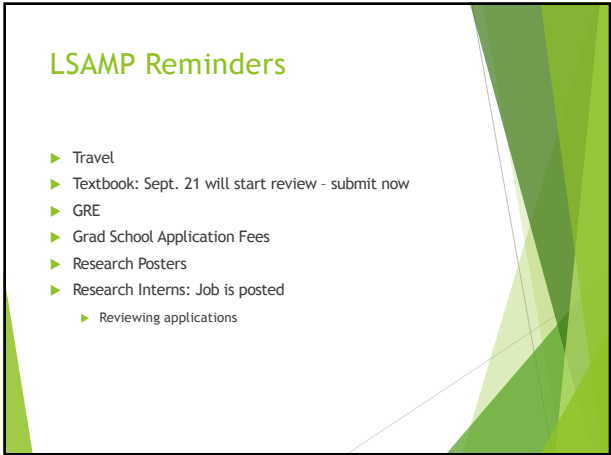
3



4



5



6

## Travel

- ▶ Please let LSAMP know when you will be traveling and what department completed the paperwork, i.e., Travel Request/Claim. LSAMP is required to submit this information to the Statewide Department at the end of each year to maintain our Grant Funding.
- ▶ We have very limited travel funds, but we may be able to help you find money to travel. Please come talk to us if you plan to travel.

7

## Travel

- ▶ **Defensive Driving-**
- ▶ Students must take and pass the campus online Defensive Driving Course in order to receive mileage reimbursement on Travel Claims.
- ▶ Test can be found on university website
  - ▶ <https://www.csustan.edu/safety-risk-management/defensive-driver-program/defensive-driver-training>
  - ▶ Fill out form
  - ▶ Link for Test and Certificate will be emailed to you
  - ▶ LSAMP needs Original Certificate

8

## Textbook Reimbursements

- ▶ LSAMP will pay up to \$200.00 per student per semester (as our budget allows) provided you attended at least half the meetings in the previous semester (exception for new admits)
- ▶ Must be required for a STEM class and you must pay for it
- ▶ Grant says TEXTBOOKS, this includes
  - ▶ Ebooks
  - ▶ Book rentals
  - ▶ Online materials bundled with the books
  - ▶ NOT other required equipment and supplies
- ▶ Please email to Dr. Martin
  - ▶ A copy of syllabus
  - ▶ ORIGINAL RECEIPTS with your name and proof of payment

9

## GRE Fee Reimbursements

- ▶ LSAMP will reimburse GRE test fees (as our budget allows) for one general exam and one subject exam. If funds are not sufficient we will prioritize by meeting attendance.
- ▶ To receive reimbursement we need proof of payment and proof you took it, so please email to Dr. Martin
  - ▶ A receipt showing you paid for the test
  - ▶ GRE Score Sheet
- ▶ We are not able to pay for standby fees or for additional attempts

10

## Graduate School Application Fees

- ▶ We have a limited budget to pay for graduate school application fees. We cannot pay for fees that you could have had waived as an LSAMP participants, so please check on waivers before you pay. If the fee cannot be waived, we need proof that you paid the fee.

11

## Gray Areas

- ▶ In general, it is best to submit the paperwork for things that might not be reimbursable, since sometimes we end the year with a little extra money and will look for student reimbursements to pay.
- ▶ Once you have officially graduated we will most likely not be able to process reimbursements to you.

12

## Research Poster Printing

- ▶ We can pay to have research posters that you will be using to present your work printed through Reprographics. You can come to the LSAMP Office to pick up the form Reprographics needs to bill us.
- ▶ Posters are generally 3 ft. by 4 ft. in color on plain paper and cost about \$35.
- ▶ Everyone doing research should have a poster in the College of Science Poster Celebration in May.
- ▶ Your research mentor should be able to help you design a poster. Please contact us if you have any questions.

13

## Research Interns

- ▶ We are just now selecting and hiring our research interns for Fall
- ▶ If we have more applicants than funds, priority goes to:
  - ▶ Continuing Interns who have complied with the requirements
  - ▶ LSAMP participation - e.g. meeting attendance
  - ▶ Distribution over majors and mentors
- ▶ Sometimes Interns graduate in the Fall, so if you applied and didn't receive it, try again in Spring
- ▶ We will keep your application open - depending on funds we may have one or two late hires
- ▶ Some expectations for Spring semester
  - ▶ Student Research Competition
  - ▶ College of Science Poster Session

14

## Some work details

- ▶ Interns
  - ▶ Responsible Conduct of Research Training and Certificate of Completion (CITI) are required before Interns can start work.
- ▶ Timesheets for Interns
  - ▶ Please go into your MyCSUSTAN timesheet around the middle of the month and make sure you are able to enter your hours. If there is a problem we need to know about it before the end of the month so we can fix it and you can get paid on time.
  - ▶ Pay attention to emails from us!!! And respond!!!

15

16

## Opportunities

- ▶ Chemistry Career Club: Fridays at 2 pm
- ▶ Physics and Math are also starting speaker series
- ▶ SERSCA Assistantships
- ▶ SERSCA Travel
- ▶ SERSCA Mini
- ▶ Wine chemistry and data mining group
- ▶ Diversity Forum
- ▶ CSUPERB
- ▶ Coast

17

## SERSCA

- ▶ SERSCA Programs (<https://www.csustan.edu/office-research-sponsored-programs/sersca-program>)
- ▶ Graduate Student Assistantships: \$2000 (applications due 9/12; requires faculty sponsor and proposal)
- ▶ Undergraduate Assistantships: \$1000 (applications due 9/12; requires faculty sponsor and proposal)
- ▶ Mini-grants: up to \$300 (applications will undergo immediate review, and awards will be made until all funds are allocated)
- ▶ Travel grants: up to \$1200 for students presenting, and up to \$800 for students attending conferences (applications will undergo immediate review, and awards will be made until all funds are allocated)

18

### Research Group Recruiting

- ▶ Drs. Martin and Aleman run a research group on Thursdays at 12:30 pm, first meeting is Sept. 17th
- ▶ We use wine and grape, chemical and sensory data, to explore
- ▶ Good for any STEM major
- ▶ Contact Dr. Martin if interested

19

### 2022 California Forum for Diversity in Graduate Education

- ▶ Long Beach Convention Center
- ▶ November 5, 2022
- ▶ Registration for the California Graduate Forum registration is open now at:
  - ▶ [https://calstate\\_eventsair.com/2022-forum/student-reg](https://calstate_eventsair.com/2022-forum/student-reg)
- ▶ The registration code is: diversity2022
- ▶ The registration deadline is Friday, October 14, 2022 or until the Forum reaches full capacity.
- ▶ There is *no charge to students* to attend.

20

### CSUPERB

- ▶ CSUPERB defines biotechnology as a fusion of biology and technology. The Biotechnology Industry Organization (BIO) [lists biotechnology examples](#). CSUPERB explicitly adds to the list health IT and medical device research and development. CSUPERB welcomes and encourages applications from CSU faculty in all disciplines related to the current practice of biotechnology, including but not limited to life sciences, physical sciences, clinical sciences, math, computer science, agricultural science, engineering, and/or business.

21

### DOD SMART Scholarships for Service

- ▶ [https://www.smartscholarship.org/smart?utm\\_source=MDRe1&utm\\_medium=email&utm\\_campaign=SMART2023](https://www.smartscholarship.org/smart?utm_source=MDRe1&utm_medium=email&utm_campaign=SMART2023)
- ▶ Sent to listserv yesterday
- ▶ December 1 Deadline

22

### And now!

- ▶ **How to make the most of a conference**
- ▶ **LSAMP Student Panel**
- ▶ **Andrew Rodriguez**
- ▶ **Kandiss Ulm**

23

### What types of conferences are there anyway?

- ▶ Student-Centered
  - ▶ GMS
  - ▶ California Forum for Diversity in Graduate Education
  - ▶ ERN
  - ▶ SPHE
- ▶ Interdisciplinary
  - ▶ CSUPERB
  - ▶ Coast
  - ▶ SACNAS
- ▶ Discipline - students and faculty - diversity
  - ▶ TAPIA
  - ▶ GHC
- ▶ Discipline - Research
  - ▶ ACM
  - ▶ ACS
  - ▶ AAAL
  - ▶ SIGIR

24

### Once you pick a conference...

- ▶ Why would you want to go?
- ▶ How can you get funding?
- ▶ How can you prepare?
  - ▶ Clarify your goals
  - ▶ Make a plan
  - ▶ Review agenda
  - ▶ Elevator Speech
  - ▶ Asking Questions

25

### And now our panel!

- ▶ Some questions to get us started:
  - ▶ Tell us about the conferences you have attended.
  - ▶ What did you do that worked?
  - ▶ What do you wish you had known or done?
  - ▶ Other thoughts you would like to share?
- ▶ Your turn to ask!

26