

## LSAMP Meeting

September 9, 2021

1

## LSAMP Meetings: Fall 2021

- ▶ September 9, 2021
- ▶ October 7, 2021
- ▶ October 21, 2021 - Tentative
- ▶ November 11, 2021 - Veteran's Day
- ▶ December 9, 2021
- ▶ All Meetings are on Thursdays-
- ▶ Time: 5:00-6:30 p.m.
- ▶ Location: Zoom

2

## Campus Coordinators

- ▶ Dr. Melanie Martin
  - ▶ Program Director and Campus Coordinator
  - ▶ Professor of Computer Science and Mathematics
  - ▶ [mmartin@csustan.edu](mailto:mmartin@csustan.edu)
- ▶ Dr. Marina Gerson
  - ▶ Campus Coordinator
  - ▶ Professor of Biological Sciences
  - ▶ [mgerson@csustan.edu](mailto:mgerson@csustan.edu)

3

## Administrative Support

- ▶ MEGAN CORDEIRO
- ▶ Administrative Support Coordinator I
- ▶ College of Science, Dean's Office
- ▶ CALIFORNIA STATE UNIVERSITY, STANISLAUS
- ▶ T 209.667.6927
- ▶ O 209.667.3153
- ▶ [mmcordeiro@csustan.edu](mailto:mmcordeiro@csustan.edu)
- ▶ <https://outlook.office365.com/owa/calendar/MeganCordeiro1@csustan.edu/bookings/>
- ▶

4

## Tonight

- ▶ Sign in: <https://forms.gle/1s32VrRKg9BpQRvYA>
- ▶ Intro to LSAMP
- ▶ Announcements - opportunities
- ▶ Roadmap to Graduation and Beyond

5

## What we offer students (Funding - must be in LSAMP)

- ▶ Paid undergraduate research experience directed by a faculty mentor. (12+ positions)
  - ▶ Join LSAMP first
  - ▶ Then find faculty mentor and apply to be Research Intern
- ▶ Math and Science text book reimbursement for qualified students
- ▶ GRE Reimbursement
- ▶ Grad School Application Fee Waivers and Reimbursement
- ▶ Poster Printing
- ▶ Limited Travel Funds
- ▶ PROUD Scholars
- ▶ ERN Conference

6

## What we offer Students (Open to everyone)

- ▶ Listserv.
  - ▶ Announcements and Opportunities
- ▶ Mentoring by peers and faculty members.
- ▶ Graduate School / Career preparation.
- ▶ California Forum for Diversity in Graduate Education.
- ▶ Bridge to the Doctorate Programs.
- ▶ National and International opportunities.

7

## Research Interns

- ▶ We are just now selecting and hiring our research interns for Fall
- ▶ If we have more applicants than funds, priority goes to:
  - ▶ Continuing Interns who have complied with the requirements
  - ▶ LSAMP participation - e.g. meeting attendance
  - ▶ Distribution over majors and mentors
- ▶ Sometimes Interns graduate in the Fall, so if you applied and didn't receive it, try again in Spring
- ▶ We will keep your application open - depending on funds we may have one or two late hires
- ▶ Some expectations for Spring semester
  - ▶ Student Research Competition
  - ▶ College of Science Poster Session

8

## Some work details

- ▶ Interns
  - ▶ Responsible Conduct of Research Training and Certificate of Completion (CITI) are required before Interns can start work.
- ▶ Timesheets for Interns
  - ▶ Please go into your MyCSUSTAN timesheet around the middle of the month and make sure you are able to enter your hours. If there is a problem we need to know about it before the end of the month so we can fix it and you can get paid on time.
  - ▶ Pay attention to emails from us!!! And respond!!!

9

## Textbook Reimbursements

- ▶ LSAMP will pay up to \$200.00 per student per semester (as our budget allows) provided you attended at least half the meetings in the previous semester (exception for new admits)
- ▶ Must be required for a STEM class and you must pay for it
- ▶ Grant says TEXTBOOKS, this includes
  - ▶ Ebooks
  - ▶ Book rentals
  - ▶ Online materials bundled with the books
  - ▶ NOT other required equipment and supplies
- ▶ Email to Dr. Martin:
  - ▶ A copy of syllabus
  - ▶ ORIGINAL RECEIPTS with your name and proof of payment

10

## GRE Fee Reimbursements

- ▶ LSAMP will reimburse GRE test fees (as our budget allows) for one general exam and one subject exam. If funds are not sufficient we will prioritize by meeting attendance.
- ▶ To receive reimbursement we need proof of payment and proof you took it, so please email to Dr. Martin:
  - ▶ A receipt showing you paid for the test
  - ▶ GRE Score Sheet
- ▶ We are not able to pay for standby fees or for additional attempts

11

## Graduate School Application Fees

- ▶ We have a limited budget to pay for graduate school application fees. We cannot pay for fees that you could have had waived as an LSAMP participants, so please check on waivers before you pay. If the fee cannot be waived, we need proof that you paid the fee.

12

## Research Poster Printing

- ▶ We can pay to have research posters that you will be using to present your work printed through Reprographics. You can come to the LSAMP Office to pick up the form Reprographics needs to bill us.
- ▶ Posters are generally 3 ft. by 4 ft. in color on plain paper and cost about \$35.
- ▶ Everyone doing research should have a poster in the College of Science Poster Celebration in May.
- ▶ Your research mentor should be able to help you design a poster. Please contact us if you have any questions.

13

## Travel

- ▶ Please let LSAMP know when you will be traveling and what department completed the paperwork, i.e., Travel Request/Claim. LSAMP is required to submit this information to the Statewide Department at the end of each year to maintain our Grant Funding. Includes attending virtual conferences.
- ▶ We have very limited travel funds, but we may be able to help you find money to travel. Please come talk to us if you plan to travel.

14

## Travel

- ▶ **Defensive Driving-**
- ▶ Students must take and pass the campus online Defensive Driving Course in order to receive mileage reimbursement on Travel Claims.
- ▶ Test can be found on university website
  - ▶ <https://www.csustan.edu/training-development/defensive-driver-training>
  - ▶ Fill out form
  - ▶ Link for Test and Certificate will be emailed to you
  - ▶ LSAMP needs Original Certificate

15

## Gray Areas

- ▶ In general, it is best to submit the paperwork for things that might not be reimbursable, since sometimes we end the year with a little extra money and will look for student reimbursements to pay.
- ▶ Once you have officially graduated we will most likely not be able to process reimbursements to you.

16

## Opportunities

- ▶ Chemistry Career Club: Fridays at 2 pm
- ▶ SERSCA Assistantships
- ▶ SERSCA Travel
- ▶ SERSCA Mini
- ▶ Diversity Forum
- ▶ CSUPERB
- ▶ Pomona Workshop List
- ▶ Cal-Bridge
- ▶ Costa Rica Winter Research Program - Sept 20 deadline
- ▶ Nuclear Security Enterprise Virtual Career Day
  - ▶ September 15

17

## Chemistry Careers Club

**Friday, September 10<sup>th</sup>**  
Live Webinar via Zoom  
(One-time registration required)  
**@ 2:00PM**

EVERYONE IS WELCOME

**Dr. Sherri A. Mason**  
Sustainability Coordinator, Penn State  
Behrend

"The Plastic Paradox"



55	Cs
132.9054519	Cesium
92	U
238.02891	Uranium
16	S
32.065	Sulfur
73	Ta
180.94788	Tantalum
7	N
14.0067	Nitrogen

18

## SERSCA

- ▶ SERSCA Programs (<https://www.csustan.edu/office-research-sponsored-programs/sersca-program>)
- ▶ Graduate Student Assistantships: \$2000 (applications due 9/13; requires faculty sponsor and proposal)
- ▶ Undergraduate Assistantships: \$1000 (applications due 9/13; requires faculty sponsor and proposal)
- ▶ Mini-grants: up to \$500 (applications will undergo immediate review, and awards will be made until all funds are allocated)
- ▶ Travel grants: up to \$1200 for students presenting, and up to \$800 for students attending conferences (applications will undergo immediate review, and awards will be made until all funds are allocated)

19

## 2021 California Forum for Diversity in Graduate Education

- ▶ October 22-23, 2021
- ▶ <https://www.caldiversityforum.org/>
- ▶ All-day programs on academic and career opportunities associated with advanced study at the doctoral level.
- ▶ Meet representatives of the nation's leading graduate schools offering Master's and Ph.D. degrees
- ▶ Attend workshops and panel sessions.
- ▶ There is *no charge to students* to attend.
- ▶ More will be coming soon...

20

## CSUPERB

- ▶ CSUPERB defines biotechnology as a fusion of biology and technology. The Biotechnology Industry Organization (BIO) [lists biotechnology examples](#). CSUPERB explicitly adds to the list health IT and medical device research and development. CSUPERB welcomes and encourages applications from CSU faculty in all disciplines related to the current practice of biotechnology, including but not limited to life sciences, physical sciences, clinical sciences, math, computer science, agricultural science, engineering, and/or business.

21

## CSUPERB

- ▶ The open 2021-2022 grant programs, found on the CSUPERB home page (<https://www.calstate.edu/csUPERB>) are:
- ▶ Student Grant Programs  
October 4, 2021 Deadline - Student Travel Grants
- ▶ October 12, 2021 Deadline - Howell-CSUPERB (Undergraduate) Research Scholars Program

22

## Pomona Workshop List

- ▶ <https://docs.google.com/spreadsheets/d/1lhFNZPGoi9GQNJYEQZfdWQmqlgHdOe7wUfNs-nD9A4/edit?usp=sharing>

23

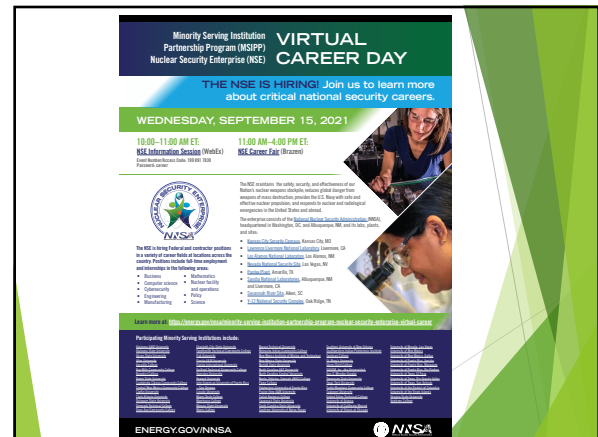
## Cal-Bridge

- ▶ Cal-Bridge
  - ▶ CS and Physics/Astronomy
  - ▶ Dr. Melanie Martin, Dr. Wing To
  - ▶ <https://www.ccp.edu/calbridge/index.shtml>

24



25



26

## And now!

- ▶ Road Map to Graduation and Beyond
- ▶ <https://www.idealists.org/grad-schools/blog/improve-chances-grad-school-undergrad>
- ▶ Dr. Martin's Rule #1
  - ▶ Start where you are not where are, not where you wish you were

27

## Where do you want to go?

- ▶ Graduate School
- ▶ Professional School
- ▶ Career
- ▶ Job
- ▶ Don't know

28

## What do "they" want?

- ▶ To know that you:
  - ▶ Will show up
  - ▶ Will work hard
  - ▶ Have skills
  - ▶ Have knowledge
  - ▶ Have potential
  - ▶ Have resilience
  - ▶ Play well with others - communicate well
  - ▶ Are not afraid to fail
  - ▶ Are or could be a leader
  - ▶ ...

29

## How do you show these?

- ▶ Do well in classes
  - ▶ Learn what is being taught
  - ▶ Develop skills
  - ▶ Get to know professors (references)
- ▶ Extra curricular activities
  - ▶ Research
  - ▶ Internships
  - ▶ Clubs
- ▶ Ideas???

30

## Breakout Rooms

- ▶ Tell others:
  - ▶ Your name
  - ▶ Your major
  - ▶ Your favorite food
  - ▶ Your favorite class so far this semester
- ▶ Discuss and come up with an answer or two to report out:
  - ▶ What can you do to improve your chances of getting where you want to go
    - ▶ This semester
    - ▶ Longer term
- ▶ Report out
  - ▶ Person who is currently closest to the MSR Building

31